



COMPUTER SYSTEM SERVICING

Prepared by:

Caridad V. Orogo
Teacher II

Learning Competencies:



LO. 2 SET NETWORK CONFIGURATION

TLE_IACSS9-12SUCN-Ia-e-34

Objectives:

- To identify network address and broadcast address.
- Determine the types of IP address and its subnet mask.
- Calculate broadcast address.

Computer Network

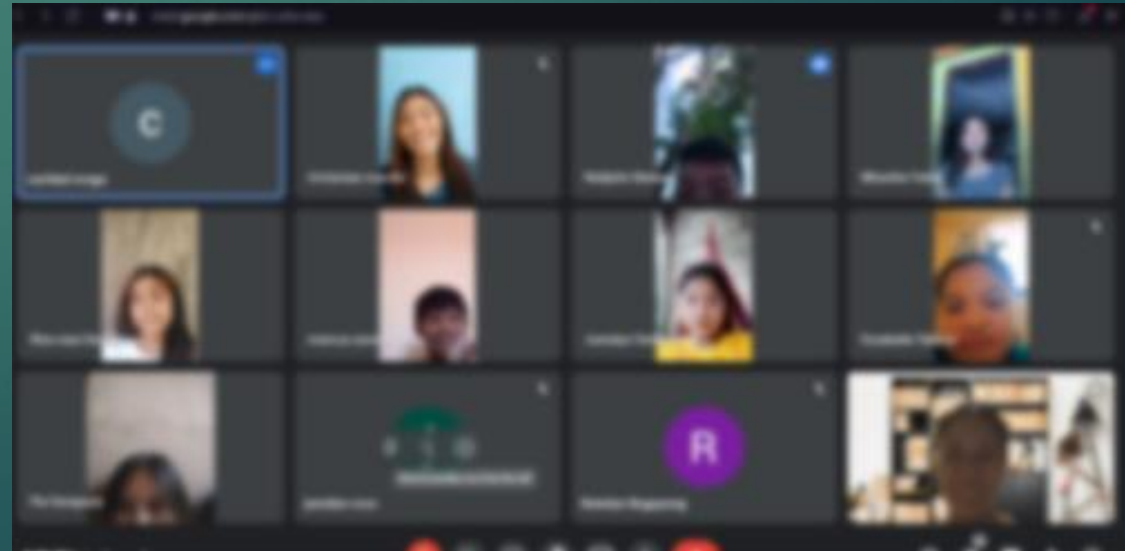
is a group of computers and various networking devices that connect to share information and resources.



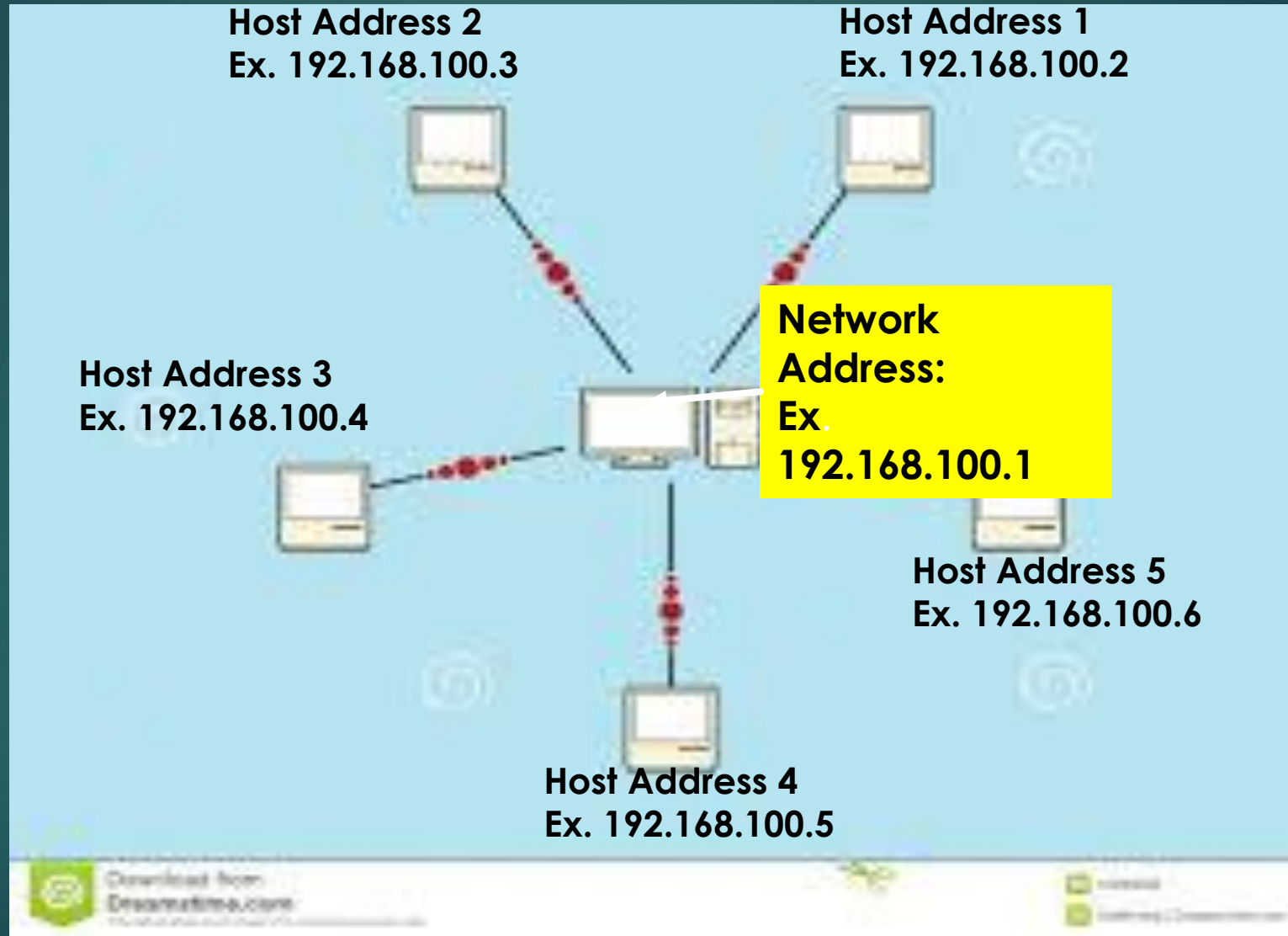
chatting



Video conference



Network Address and Host



A network address

is an identifier for a node or host on a telecommunications network.

A broadcast address

is an **IP address** that is used to target all systems on a specific subnet network instead of single hosts.

Subnet

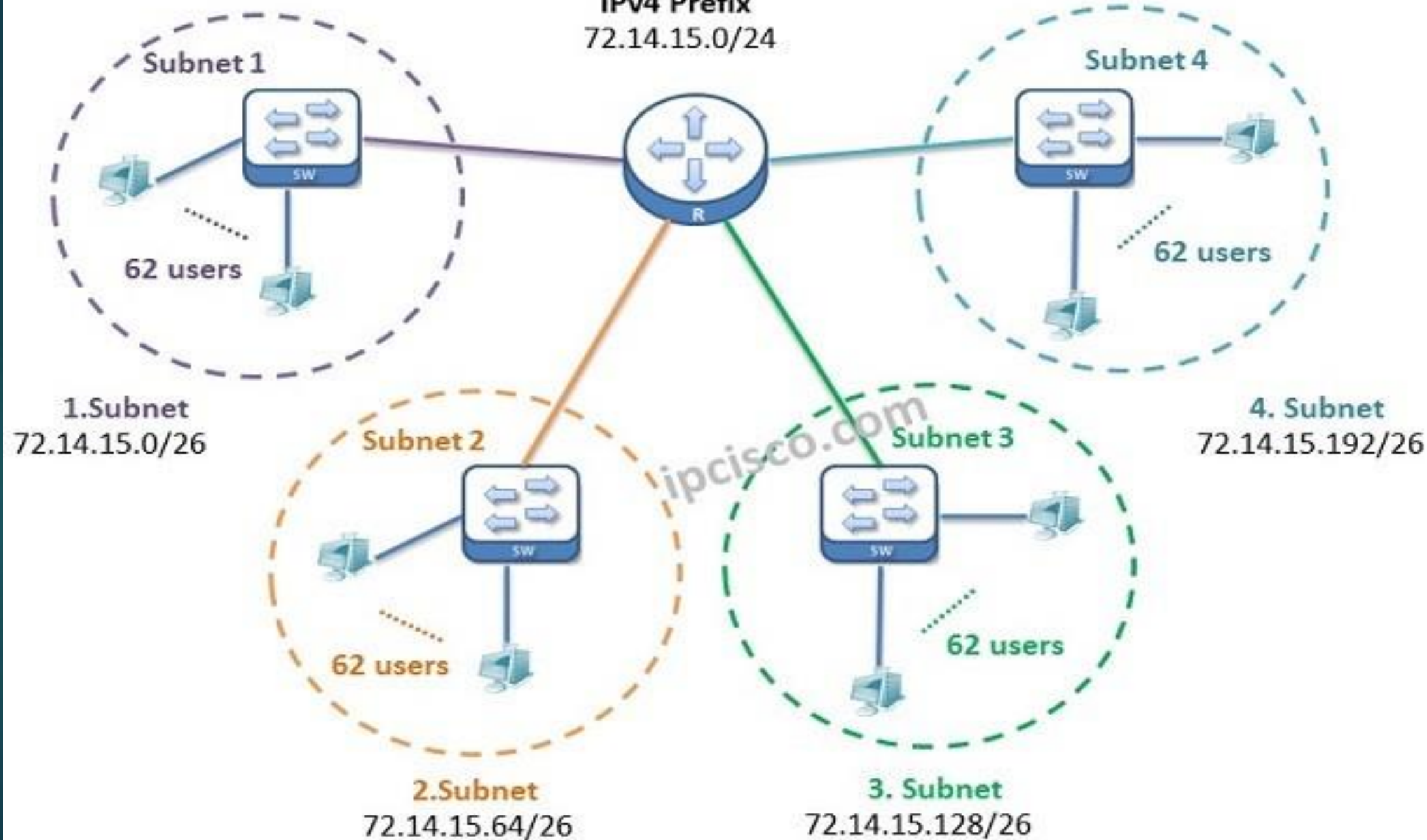


If a large computer network is divided into smaller groups, each group

Host Address

is used to find the computer or the device in the subnet

IPv4 Prefix
72.14.15.0/24



Classes of IP Address

1. Class A

Used for large networks, implemented by large companies and some countries.

| START | END |
|---------|-----------------|
| 0.0.0.0 | 127.255.255.255 |

| SUBNET MASK |
|-------------|
| 255.0.0.0 |

Example:

12.34.56.7

100.34.56.7

2. Class B

Used for medium-sized networks, implemented by universities

| START | END |
|------------------|-----------------|
| 128.0.0.0 | 191.255.255.255 |

| SUBNET MASK |
|--------------------|
| 255.255.0.0 |

Example:

132.78.24.57

170.114.56.200

2. Class B

Used for small networks, implemented by ISPs for customer subscriptions

| START | END |
|------------------|-----------------|
| 192.0.0.0 | 223.255.255.255 |

| SUBNET MASK |
|----------------------|
| 255.255.255.0 |

Example:

192.168.20.50

200.40.56.10

Example:

**Class A:
Network
Address
10.9.4.1**

**Host
255.0.0.0**

**Class A:
Network Address
120.20.5.10**

**Host
255.0.0.0**

**Class B:
Network Address
128.9.4.1**

**Host
255.255.0.0**

**Class B:
Network
Address
190.9.4.1**

**Host
255.255.0.0**

**Class C:
Network Address
192.168.4.1**

**Host
255.255.255.0**

**Class C:
Network Address
210.168.4.1**

**Host
255.255.255.0**

Try me?

Identify what class types of ip address.

- | | | |
|-------------------|---------|-----------------|
| 1.) 178.200.123.5 | class B | 255.255.0.0 |
| 2.) 5.200.13.55 | class A | 255.0.0.0 |
| 2.) 205.20.1.100 | class C | 255.255.255.255 |

| IP CLASS | START | END | SUBNET MASK |
|-----------------|--------------|-----------------|--------------------|
| CLASS A | 0.0.0.0 | 127.255.255.255 | 255.0.0.0 |
| CLASS B | 128.0.0.0 | 191.255.255.255 | 255.255.0.0 |
| CLASS C | 192.0.0.0 | 223.255.255.255 | 255.255.255.0 |

CALCULATE BROADCAST ADDRESS

Example:

25.12.15.16



Network Address or NA

255.0.0.0



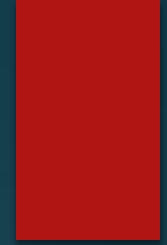
Subnet Mask:

Broadcast Address or BA?

25.255.255.255



EVALUATE ME?



Network Address

Broadcast Address

1.) 100.10.12.2

2.) 190.23.122.20

3.) 180.253.172. 0

4.) 80.23.17. 10

5.) 193.30.7. 60

Thank you